

Safetrolley Explosion Proof IP Camera Model: DS-2CD1143G2-LIU



Product Overview

The Safetrolley Explosion Proof IP Camera DS-2CD1143G2-LIU is a ruggedized industrial surveillance camera based on the Hikvision DS-2CD1143G2-LIU platform and integrated into a certified explosion-proof enclosure. Designed for hazardous and harsh environments, this camera combines high-quality 4 MP imaging with enhanced safety, corrosion resistance, and reliability for oil & gas, chemical plants, marine, and industrial applications.

Key Features

- 4 MP (2560 × 1440) high-resolution imaging
- Human and vehicle detection analytics
- Smart Hybrid Light (IR + white light), up to 30 m
- Built-in microphone for real-time audio monitoring
- H.265+ efficient video compression
- IP67 weatherproof and IK08 vandal resistance (camera module)
- Explosion-proof housing for hazardous areas

Explosion Proof & Mechanical Specifications

- Explosion-proof enclosure manufactured from 304 stainless steel
- Designed for use in hazardous gas and dust environments
- Flameproof structure to prevent ignition of surrounding atmosphere
- Corrosion-resistant housing suitable for marine and chemical environments
- Industrial-grade cable gland for secure and sealed connections

- Enhanced heat dissipation design for continuous operation

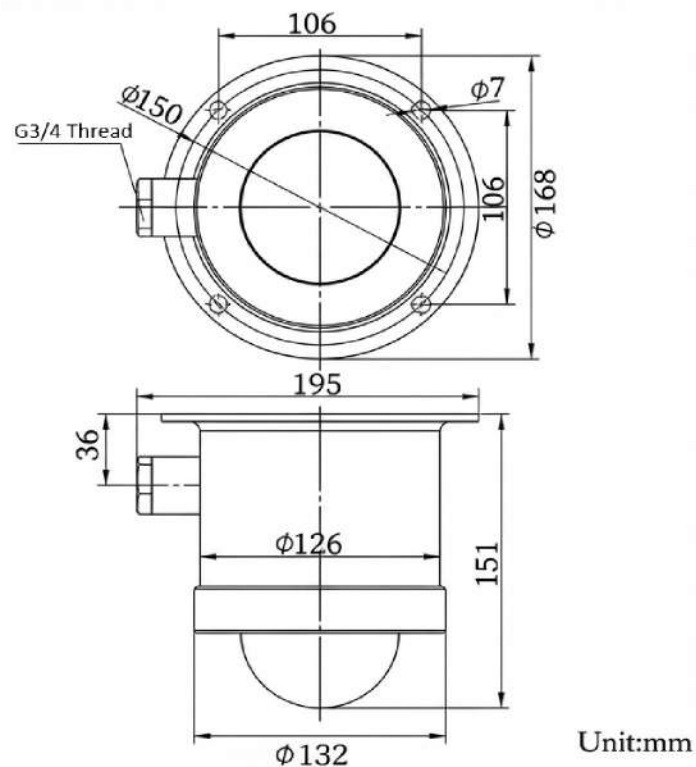
Technical Specifications

Image Sensor	1/3" Progressive Scan CMOS
Max Resolution	2560 × 1440 (4 MP)
Lens Options	2.8 mm / 4 mm fixed lens
Minimum Illumination	Color: 0.005 Lux, B/W: 0 Lux with IR
Video Compression	H.265+/H.265/H.264+/H.264
Power Supply	12 VDC or PoE (IEEE 802.3af)
Max Power Consumption	≤ 7.5 W (PoE)
Operating Temperature	-30 °C to +60 °C
Housing Material	304 Stainless Steel (Explosion Proof)

Typical Applications

- Oil & Gas facilities
- Chemical and petrochemical plants
- Offshore platforms and marine environments
- Power generation and heavy industry
- Hazardous warehouses and storage areas

Explosion Proof Housing Dimensions



Safetrolley Pte. Ltd.
Website: <https://www.safetrolley.com/>
Address: 60 Albert Street, #09-05, Singapore 189969
Email: support@safetrolley.com
Tel: +65 6327 9051